

Benelli Extractor Photos & Fine Tuning Notes

Doug White, MIT Sport Pistol Club

First, is a photo of three different brand new extractors, showing the variation in the shape of the nose you can run into. The top one has no angle to speak of, and will push the rounds down off the bolt face. The next one has a bit of an angle, but it's not big, and may have problems. The last one has a nice large angle ground on it that should push the round at least to the side of the pocket on the bolt face, if not up a bit.

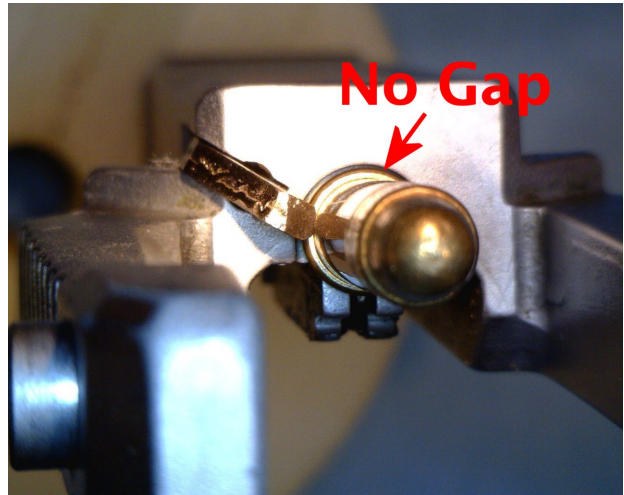
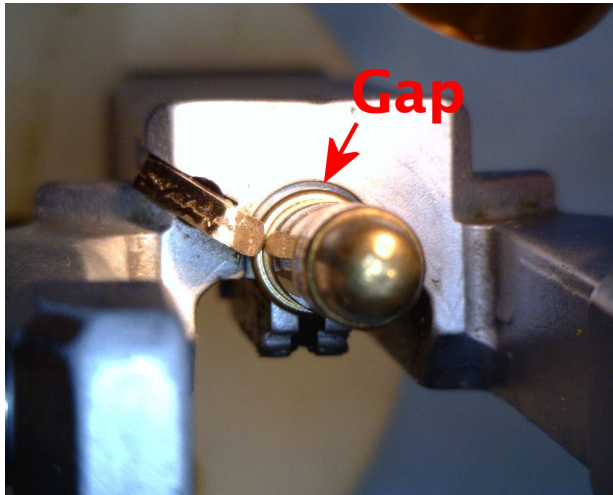


Even if there is a good angle on the nose, it helps if the part of the edge that contacts the case is sharp so it can dig into the brass a bit. None of the extractors shown are very sharp. Because there is plenty of over travel in the design, you can stone the nose back a bit without affecting anything. You do NOT want to sharpen the hook by grinding the underside, which would allow the case to slip further forward. A fine Arkansas stone is good. You don't want to remove any more metal than is absolutely necessary.

Before getting into sharpening the edge, you want to double check the angle, because adjusting that can require stoning the same edge, and once you done that, further sharpening may not be needed. Again, because of the extractor geometry, the angle on the nose is critical. Ideally, you want it to hold the case UP inside the pocket on the bolt face. Below are before & after pictures of how a case is held in one pistol:

Benelli Extractor Photos & Fine Tuning Notes

Doug White, MIT Sport Pistol Club



Because of the cylindrical case, the extractor only hits at one point. If that point is too low, the extractor mostly pushes the case sideways into the rim pocket, and the case is held too low on the bolt face. A VERY slight stoning of the nose of the extractor at an angle just over 90 degrees moves the contact point down, and the rim of the case is help UP inside the pocket.